

Steel Coil Slitting Line

We combined particular technologies from Japan, USA and Europe to manufacture - a slitting line. Our steel coil Slitting lines can achieve line speed of 150m/min with thickness range of min. 0.3mm up to max. 12.7mm.

Our slitting lines are designed to slit various materials such as Carbon Steel, Stainless Steel, Galvanized Steel, Pre-painted Steel, Silicon Steel Coils and non-ferrous material such as Copper Coils.

Specification List

MODEL NO.	COIL THICKNESS (M/M)	NO. OF CUTS	WIDTH OF SHEET (M/M)	LINE SPEED
YSL-1	0.3~1.2	10~25	750~1220	MAX:120 M/MIN
YSL-2	0.3~2.0	10~25	750~1220	MAX:120 M/MIN
YSL-3	0.3~3.0	12~25	750~1220	MAX:150 M/MIN
YSL-4	1.0~4.0	6~20	750~1220	MAX: 70 M/MIN
YSL-6	1.2~6.0	4~20	900~1550	MAX: 60 M/MIN
YSL-9	1.5~9.0	3~25	900~1550	MAX: 60 M/MIN
YSL-12	2.0~12.7	2~25	900~1550	MAX: 60 M/MIN

MODEL NO.	COIL THICKNESS (M/M)	NO. OF CUTS	WIDTH OF SHEET (M/M)	LINE SPEED
YSSL-1	0.3~1.2	10~25	750~1220	MAX:120 M/MIN
YSSL-2	0.3~2.0	10~25	750~1220	MAX:120 M/MIN
YSSL-3	0.3~3.0	12~25	750~1220	MAX:150 M/MIN
YSSL-4	1.0~4.0	6~20	750~1220	MAX: 70 M/MIN
YSSL-6	1.2~6.0	4~20	900~1550	MAX: 60 M/MIN
YSSL-9	1.5~9.0	3~25	900~1550	MAX: 60 M/MIN
YSSL-12	2.0~12.7	2~26	900~1550	MAX: 60 M/MIN

YSL : FOR CARBON STEEL COIL

YSSL : FOR STAINLESS STEEL COIL

- DESIGN FOR CARBON STEEL COIL, STAINLESS STEEL COIL, GALVANIZING STEEL COIL, COLOR PREPAINTING STEEL COIL.
- WE BUILD TO YOUR SPECIFIC CAPACITY.
- YU-NION RESERVE THE RIGHT TO CHANGE THE DESIGN WITHOUT NOTIFYING IF NECESSARY.

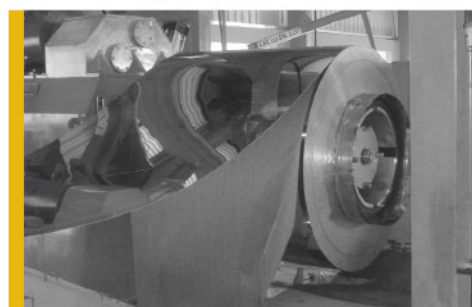


Arm Type Uncoiler

Arm type uncoiler is suitable for steel strip thickness range 0.3mm ~ 3.0mm. with coil weight max. 8 tons and strip width max. 1220mm.

Function:

1. Tension Brake By Hydraulic.
2. After loading the steel coil into the uncoiler, and by expanding the uncoiler drum the steel coil is fixed and secured. Then the uncoiler is centered by the help of hydraulic cylinder.
3. Upon demand we can equip with strip edge guiding system, in order to ensure the strip edge quality.



Scrap Winder

The scrap winders wind the trimmed scrap; and automatically adjust to the position of the strips and line speed equipped with constant torque V.S. motor or A.C. motor with inverter.

Hydraulically controlled scrap guiding system winds the scrap evenly.
Ps: Can be supplied as optional

UN-COILER & COIL CAR

PINCH ROLL STAND & LEVELLER

SHEARING M/C

LOADING TABLE

SCRAP WINDER

LOOPING TABLE

TENSION PAD & TENSION ROLL

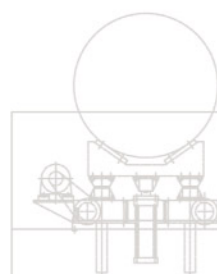
RE-COILER

Cone Type Uncoiler

Cone type uncoiler is suitable for steel strip thickness range 0.3mm~12.7mm. with coil weight max. 30 tons and strip width min. 600mm~max. 1550 mm.

Function:

1. Tension Brake By Hydraulic.
2. After loading the steel coil into the uncoiler, and by expanding the uncoiler drum the steel coil is fixed and secured. Then the uncoiler is centered by the help of hydraulic cylinder.
3. Upon demand we can equip with strip edge guiding system, in order to ensure the strip edge quality.



Tension Pad & Tension Roll

Air cushioning type; is a special design suitable for different strip thicknesses; to provide winding tension for slit strips without marking or without surface damage into the Recoiler clamping mechanism.



Shearing Machine

The shearing machine is a hydraulic Guillotine shear designed to cut off precisely the leading end of the coil.



Entry Section

The entry section includes, hold down roll,...etc.

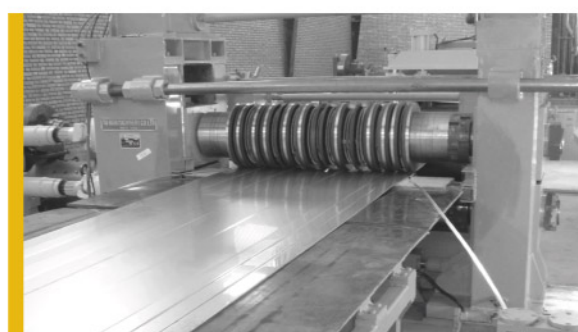


Standard Type Slitting Machine

Suitable for stainless steel coil, carbon steel coil, copper coil and silicon steel coil..., ect.

Function:

1. Upper cutter can be pressed down by motor or manually. Movable housing pulled back by hydraulic cylinder to change the knife.
2. Coil is slit into required width by rotary circular knives.



Turret Type Slitting Machine

1. With a spare set of cutting shaft for quicker changeovers, enhancing productivity compared to standard type Slitting Machine.
2. Coil is slit into required width by circular knives.
3. The main shaft is driven by gear system.



Recoiler

1. Clamps the strip by hydraulic cylinder; providing the necessary torque required to produce tightly wound straight walled coils.
2. The strips are re-winded throughout the entire coil build up onto the drum. A hydraulic powered coil pusher/clamp wipe is used to unload slit coils in conjunction with a floor mounted recoiler coil car.
3. The special clamping mechanism of design can be applied perfectly for different strip thicknesses.